



संप्रति

3 BHK APARTMENTS
SHOWROOMS

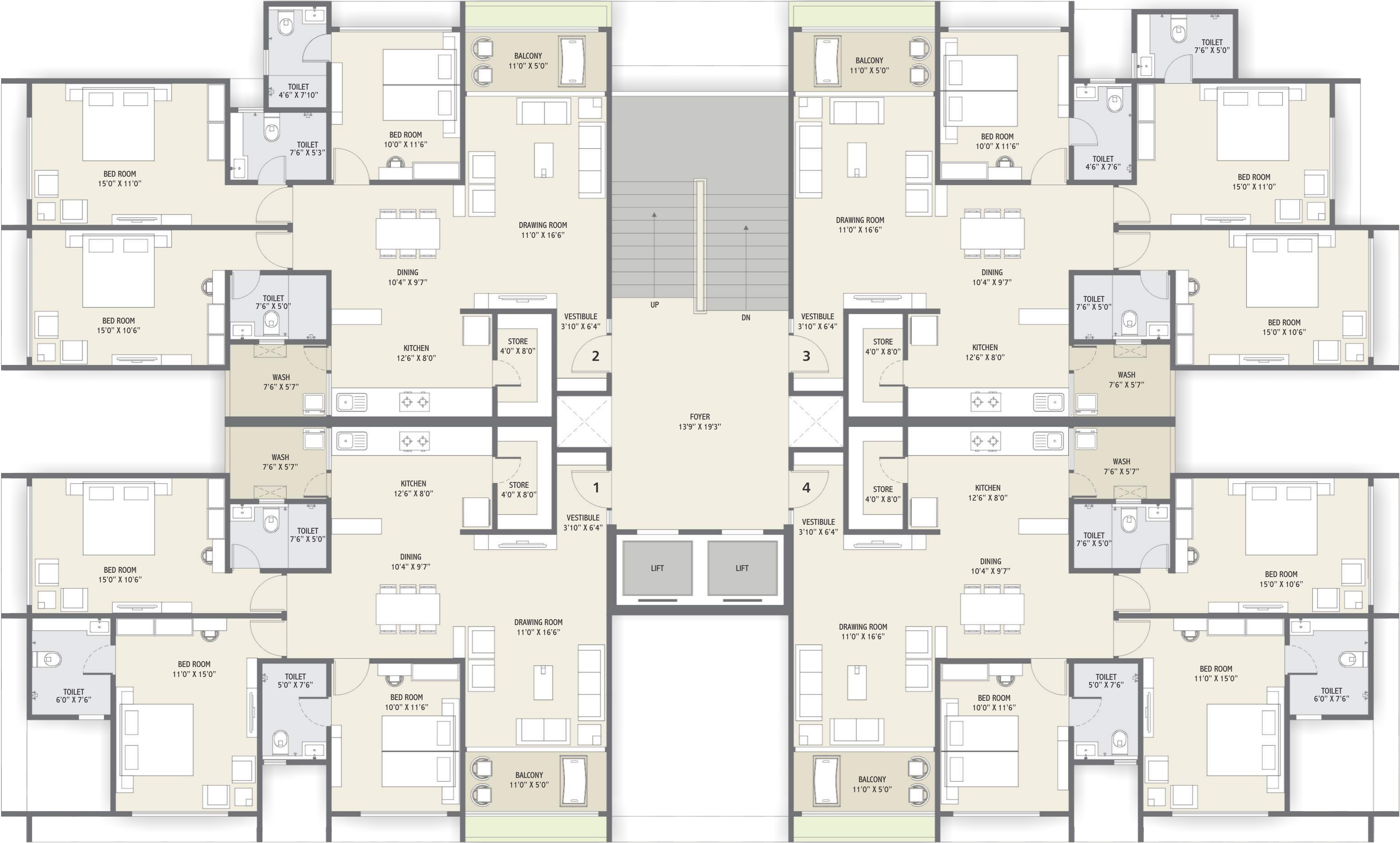


A diagram showing a square with a downward-pointing arrow originating from its center. Below the arrow is the letter 'N'.





← TO DEVKINANDAN





SPECIFICATION

Structure	R.C.C. frame structure as per national building code with brick wall.
Plaster	Internal mala plaster with white cement base Laapi finish and external double coat tippani plaster / texture with 100% acrylic water proof paint.
Flooring	Wooden flooring in master bedroom and 3'X3' Vitrified in Drawing, Dining, Kitchen & 2'X2' Vitrified in all other area. China mosaic on terrace for heat reflection.
Door / Window	Decorative main entrance door with stone revile & all other doors are stone framed flush doors. UPVC / aluminum windows with stone revile.
Kitchen	Mirror polished granite platform with premium quality tiles dado up to lintel level and S.S. sink.
Toilets	Premium quality tiles flooring and dado up to lintel level. Branded sanitary-ware and fittings.
Electrification	3-Phase concealed copper wiring with adequate number of points with provision for Split A.C. in Bed rooms & Drawing room.

NOTES

- AEC, AMC, service tax, maintenance deposit, stamp & registration charges shall be borne by purchaser.
- Developers reserve their rights to make any change in or revise the scheme or part of or any detail in the same shall be binding to all purchaser.
- No external changes shall be allowed. Only internal changes will be allowed with prior permission and shall be charged extra in advance.
- This brochure is only for advertisement and it shall not be considered as a part of legal document.



CAR PARKING



INTERCOM CONNECTION



CHILDREN PLAY AREA



AUTOMATIC ELEVATOR



GYM



CCTV CAMERA



LANDSCAPE GARDEN WITH SENIOR CITIZEN SEATING



CLUB HOUSE WITH INDOOR GAMES



POWER BACK-UP FOR COMMON AMENITIES



VOLLEY BALL COURT



BADMINTON COURT



JOGGING TRACK

OTHER FACILITIES

- Large entrance foyer at all level
- Fully paved sufficient parking area having car space for each flat
- 24 hrs. water supply
- Percolating well for rain water harvesting

Project by



AARYA
DEVELOPERS

CIVIC ORGANISERS, B-604, Shapath IV, Opp. Karnavati Club
S.G. Highway, Ahmedabad - 380 015 | Call: +91 97276 66112
E: info@civicorganisers.com | W: www.civicorganisers.com

Architect

Samir Sen Gupta & Associates

Structure

N.K. Shah

Space Planning & Design

Purvin Shah & Associates